



JCY_Edith Cowan University Library
Joondalup_WA



Sir Peter Cook & Colin Fournier_Kunsthhaus Graz
Graz_Austria



JCY_Macquarie University Competition
North Sydney_NSW



iredalepedersenhook_Walmajarri Community Center
Great Sandy Desert_WA

BUILT PEDAGOGY:

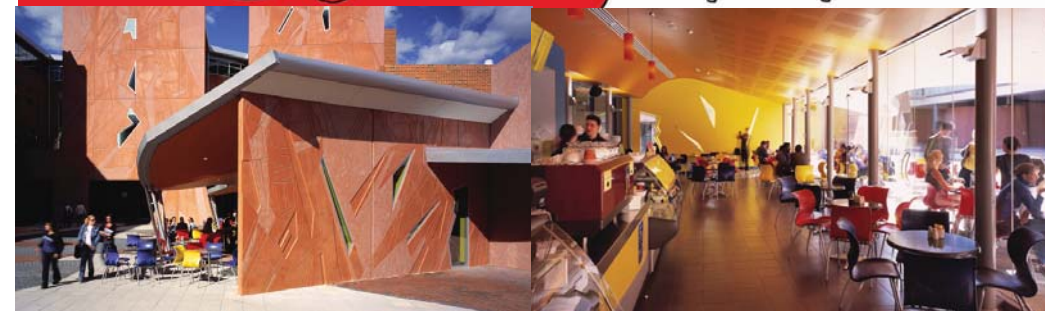
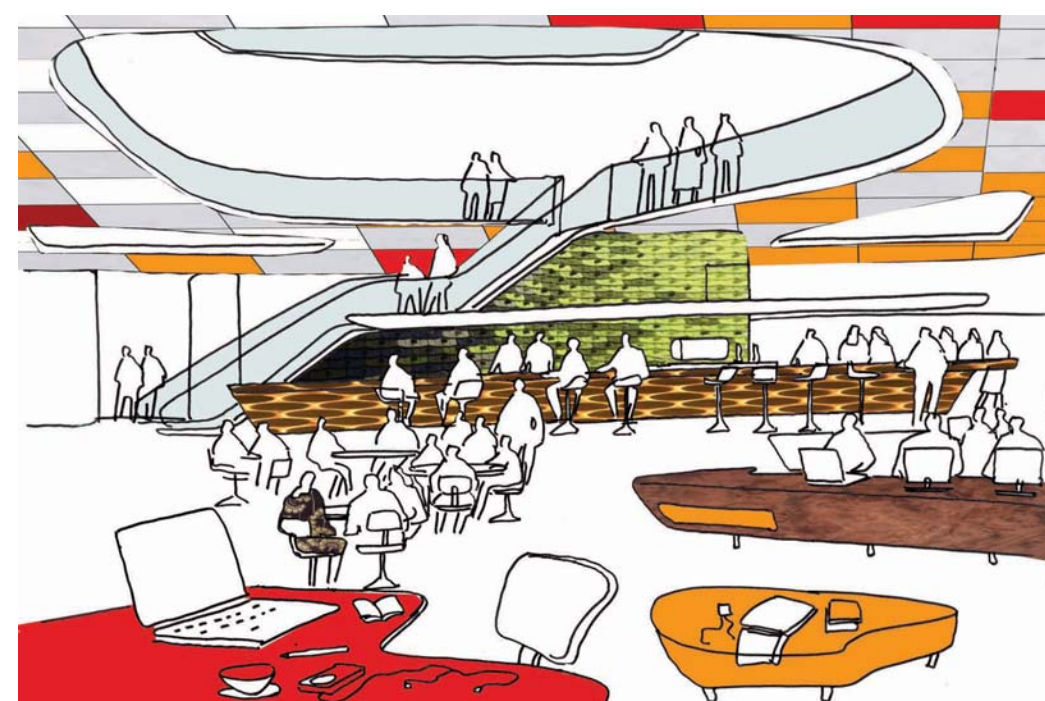
The proposed new building for the Faculty of Architecture, Building and Planning represents a unique opportunity to provide a substantial landmark building for the University of Melbourne's Parkville Campus. Such an opportunity deserves a unique collaboration of architects and consultant team; **Sir Peter Cook's CRAB studio, iredale pedersen hook architects and JCY Architects** present an highly impressive partnership of with a track record for the production of outstanding, award-winning architecture combined with an unequalled position of leadership in architecture and design education.

Sir Peter Cook's collaboration with **Colin Fournier** produced one of the most exciting pieces of architecture of our times; **the Kunsthhaus in Graz, Austria** and his recent collaboration with 'young gun' **Gavin Robotham as CRAB studio** continues to redefine a new chapter of his career actually building the remarkable architecture he proposed as a member of the definitively influential, **Archigram**. **Peter's** lifetime of experience educating thousands of young architects and his knowledge from his time as Chair of the world reknowned architecture school's of the Bartlett School of Architecture, University College London and the Stadelschule in Frankfurt provides a massive wealth of experience to draw upon.

iredale pedersen hook architects is an internationally recognised emerging architectural practice with offices in Perth and Melbourne. Each piece of their architecture seeks to embody a design response of innovation and delight. The firm provide particular expertise in the design of effective sustainable buildings with a responsible environmental and social agenda. Through their Melbourne based director **Martyn Hook** they provide the key local connection. **Martyn** is a former student of **Peter Cook** and is anticipated to adopt a pivotal role in direct communication with **CRAB office** in London. The three directors of iph have been directly and passionately involved in the education of Australian architects, **Martyn** has held a senior position in the architecture program at RMIT for ten years (currently Course Leader) and is implicitly aware of the challenges faced by Australian architecture schools. Recently **Adrian** was made Adjunct Professor of Architecture at Curtin University.

JCY Architects and Urban Designers provide the team with vital scale, design expertise and a brilliant track record of producing internationally awarded University buildings. Highly skilled, experienced and multidisciplinary, **JCY** its practice on research, inventiveness, collaboration, investigation, enquiry and design excellence within a studio based collegial workplace. Environment and landscape sustainability, human and cultural dynamics, urban enrichment and holistic economic viability, the creation of real and evolving communities, meaningful communication and stakeholder engagement, evolution in educational, office and studio environments and a committed focus on design excellence at all levels from process to function, practice, realisation and place operation and management are just a few of the keys to **JCY's** success. Under the leadership of Directors **Paul Jones (AADip)** and **Libby Gui** education has firmed as one of **JCY's** primary sectors and includes University Projects in Australia and Malaysia as well as many TAFE and secondary schools in Australia. **JCY** has been a leader in the development of education projects creating leading innovation in learning and teaching through the creation of integrated and diverse learning focused environments based on communication and collaboration.

Together this assemblage of architectural design talent has the vision, international reputation, demonstrated expertise and proven capacity to produce a remarkable piece of architecture that shall define a built manifestation of the exciting and dynamic new era for Australia's first university.



JCY_Academic environment



CRAB_Vienna University
Vienna_Austria

ACADEMIC ENVIRONMENT:

The true challenge in academic environments in Australia is the engagement with the demand for university buildings to be many things to many people. They must be effective places that provide a collegiate atmosphere within a reality that is removed from the external pressures of funding and the evolution of dynamic curriculum. The nexus of Teaching and Learning and Research must now be met by effective spaces for dissemination of the that research; particularly in a faculty of Architecture, Building and Planning where a public profile and interface with the professions are critically maintained by exhibition and lectures as much as the traditional modes of publishing books and journals.

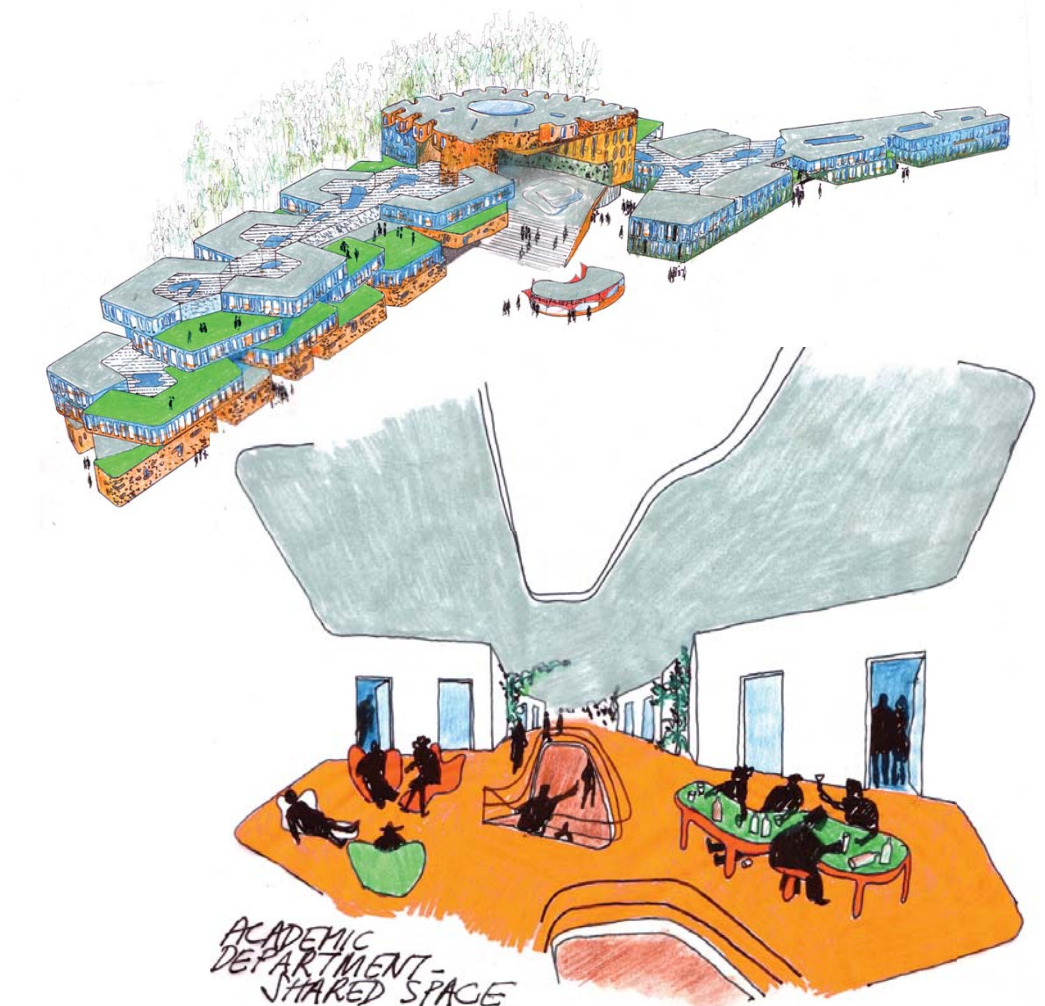
Student spaces must provide useful, well lit, highly serviced and well connected spaces for quiet study as well as dynamic space to collaborate both academically and socially with fellow students and staff.

JCY's university buildings have been commended for their ability to tackle a holistic sustainability agenda about 'environment and environment' – one being responding to and protecting from environmental conditions and the other being about creating great translucency, connected and IT enabled spaces which allow for all types of learning and communication. In particular the design of the ECU library explored the myriad of ways people might learn or use space.

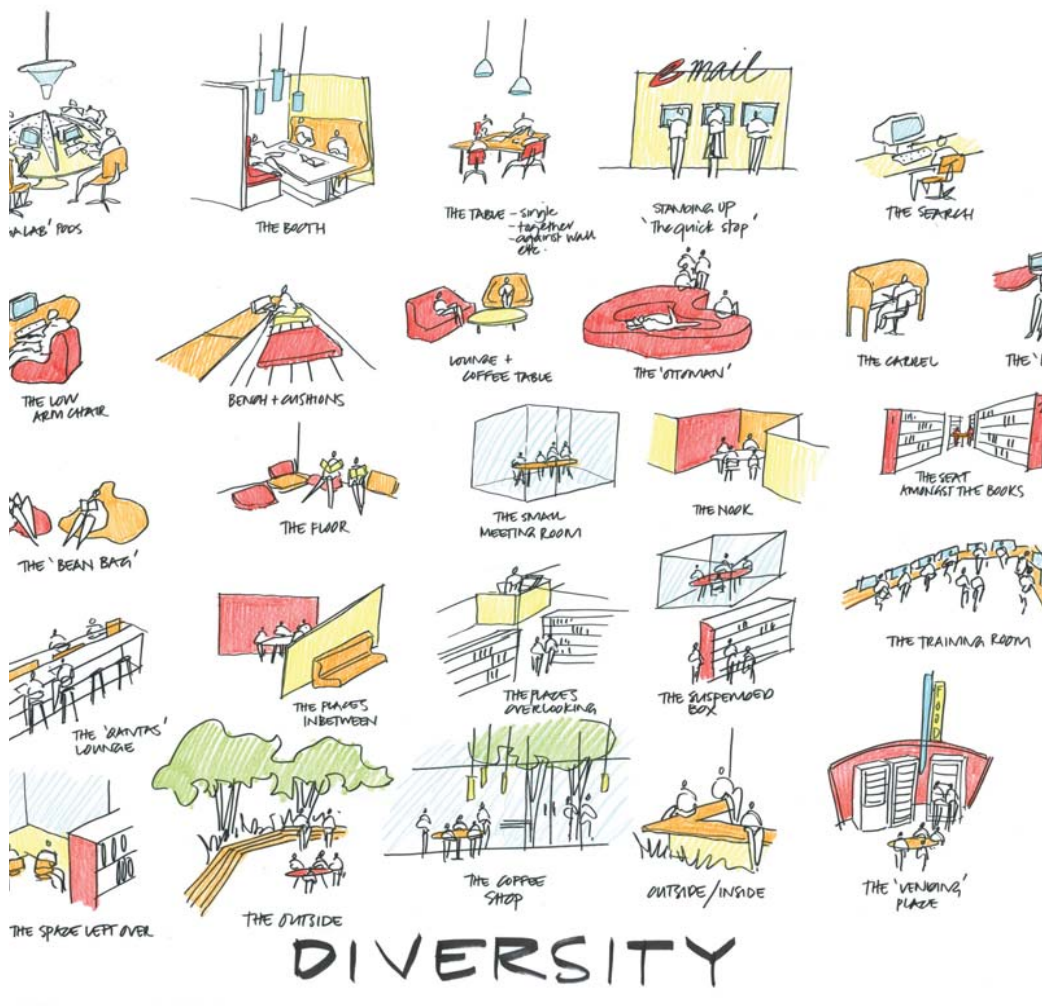
CRAB's University Law Library in Vienna (DEPARTMENTS OF LAW AND CENTRAL ADMINISTRATION WISSENSCHAFTS UNIVERSITÄT WIEN) maintains this line of discourse the master plan – by **Laura Spinadel's BUS Architekt** – establishes a series of central terraces, from which CRAB's buildings proceed to wrap around their own set of terraces, passages and enclaves.

The philosophy behind the planning and the configuration of the main study building emerges from the authors' considerable experience of university life and belief in the value of extra-curricular exchange. In other words - an acknowledgement of the value of spaces, pockets, incidental locations or coincident conditions in which academics, researchers, students or visitors will start to unwind, chat or speculate together.

The pursuit of the departmental and sub-departments within acted as an inspiration for the deliberate 'curling' or 'wrapping' of the plan. Thus creating a series of 'pockets' for informal gatherings which are orchestrated together with necessary runs of offices and research rooms. As the building has developed along through the various activity zones, this attitude towards the interplay of the formal and the informal – the defined and the peripheral has been applied to both internal spaces and the outside balconies, decks and courts.



CRAB_Vienna University
Vienna_Austria



JCY_Edith Cowan University Library
Joondalup_WA



Sir Peter Cook teaching



Sir Peter Cook at Colombia

DESIGN STUDIO:

“A really good school of architecture should be an uncomfortable place -with that special discomfort that comes from even the smartest person believing that the guy over the screen may have come up with something even better.”

Peter Cook, London 1986

The great schools of architecture across the world, the Architectural Association, The Bartlett, Harvard GSD, Columbia, The Cooper Union, SCI-arc, The Royal Academy Vienna and TU Berlin have fought very hard to retain the Design Studio as their paramount core activity. The embrace of the Design Studio supports the idea that design is the fundamental skill and primary activity of the architect and that design education is vital to the education of the architect.

The discipline of architecture is firmly grounded in the tangible: the physical form. A great teacher of architecture understands the paradox of our discipline; that the creation of the tangible rest with our ability to create from the intangible: the formless, the impact of the built form on the human experience, in our emotional, intellectual, cultural and intuitive responses to our built environment. It is within the parameters of the Design Studio the idea of inspiration, exploration, production, presentation and critique manifest in the vitality of single space is critical to successful dynamic of a school of architecture.

In a post digital framework the speculation surrounding the death of the drawing has been proven to be completely unfounded, if anything the ease in production of physical 3D models based on CAD CAM technology has increased the demand for space and room to make stuff. The proposition of ‘learning by doing’ reinforced by the Design Studio situates models, experiments and speculation as primary activities. The ability to explore and communicate the manner of that exploration is of paramount importance. The failed experiment is celebrated, the outcome dissected and examined for its flaws and success.

Whilst the team has not directly designed a space that may be called a Design Studio it has spent a very large amount of time in them and know what is needed to make a good one!

JCY’s extensive work in producing excellent teaching spaces has allowed a definition of the essential qualities for effective education. In is through the library projects both built (ECU Library) and unbuilt (Macquarie University Competition) that they have evolved a critical position on the idea of the ‘Third Space’ that may be applied to a Design Studio. The Third Place’ is a term used in the concept of community building to refer to social surroundings separate from the two usual social environments of home and the workplace. Libraries are the ultimate global ‘Third Place’ linking people physically, intellectually and technologically. Like the legendary ‘Tardis’, the finite physical spaces of any library building is merely external because it is through ‘access’ that anything is possible. This proposition is directly transferable to the Design Studio where things that occur are unable to be defined by a university guide of behavior that is, a Design Studio is not a tutorial, laboratory, seminar room it’s a studio.

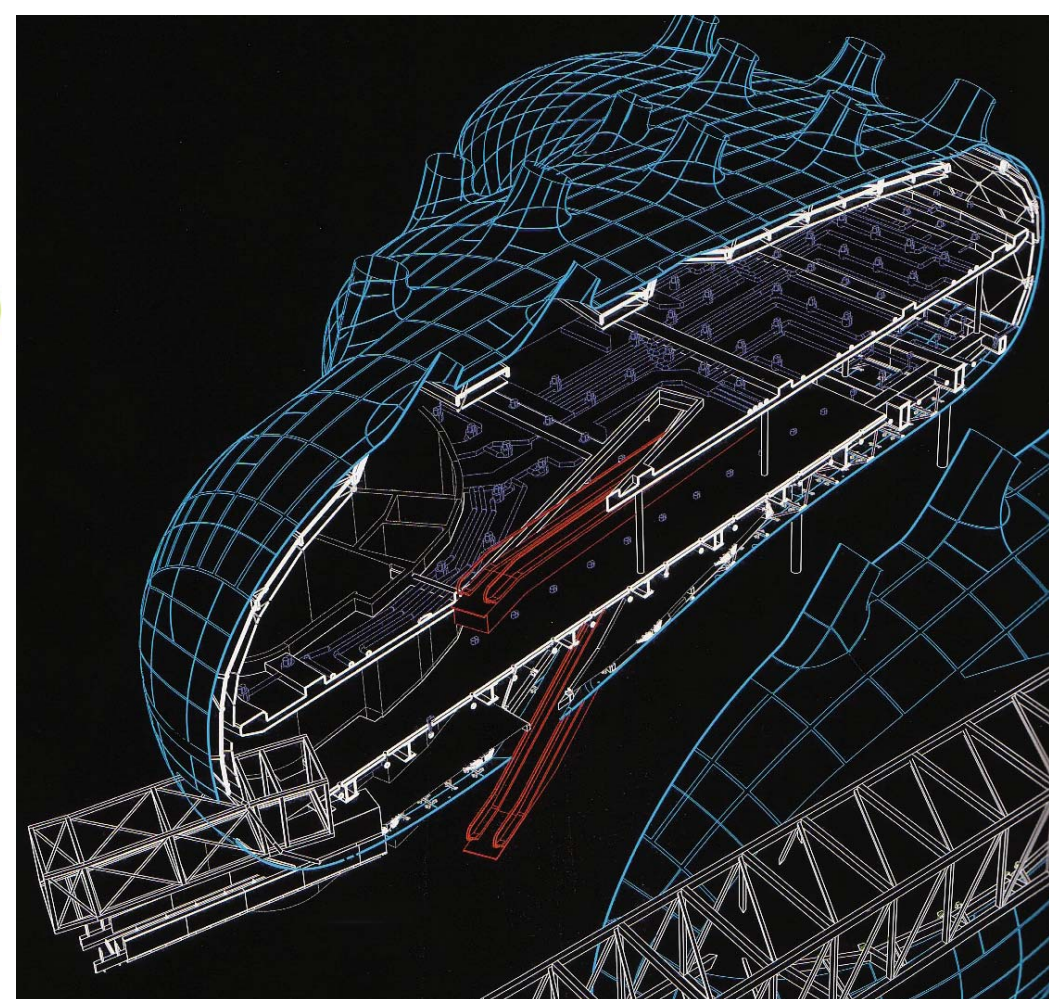
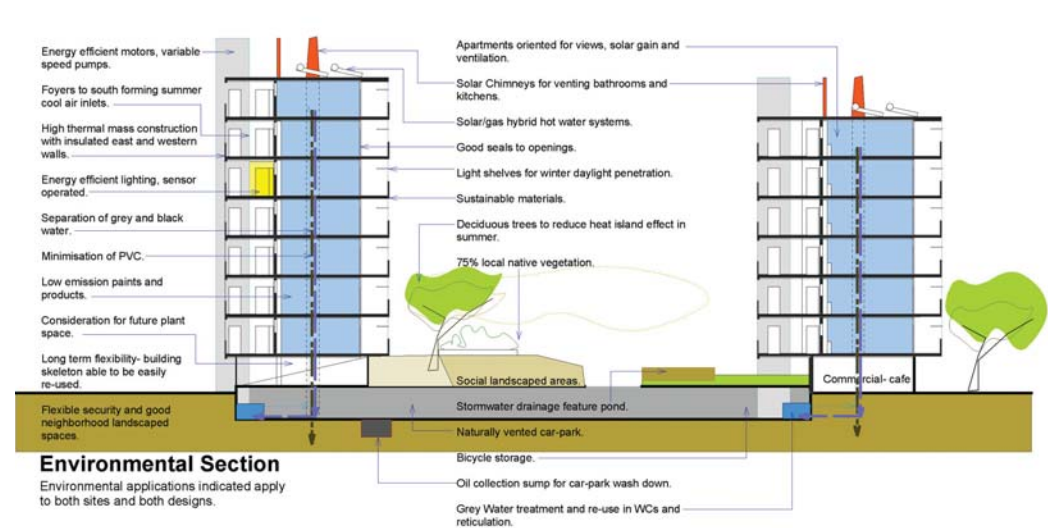


**Yale University
New Haven, Connecticut**



**SCI_arc
Los Angeles, California**





LIVING BUILDING:

Environmental Construct

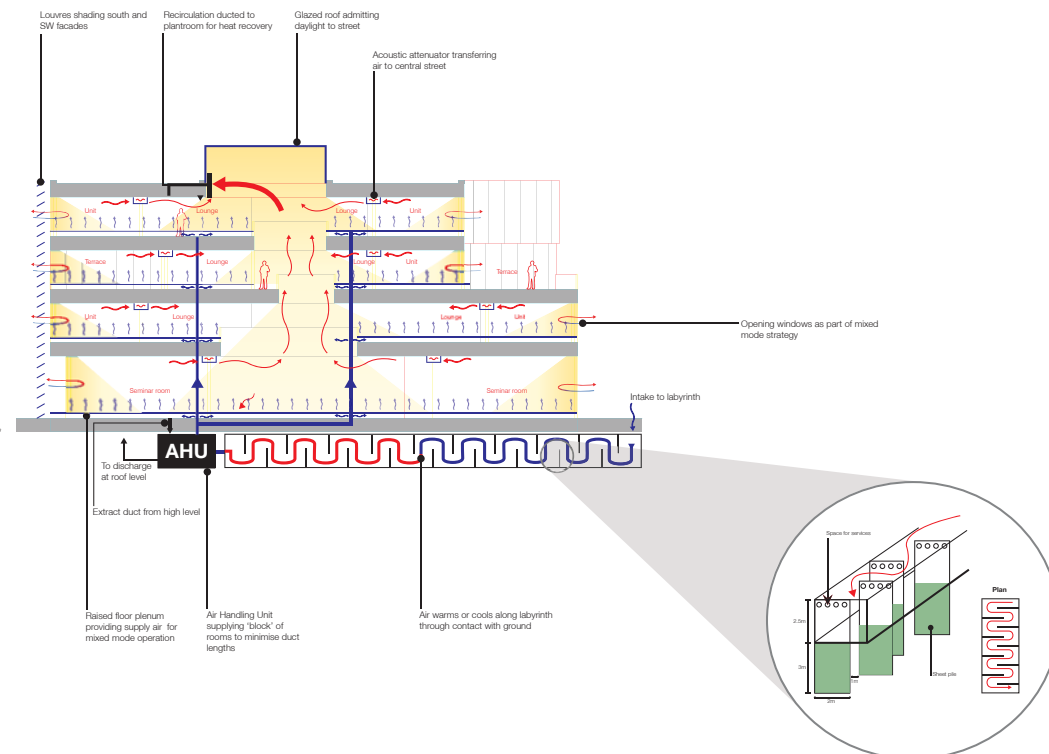
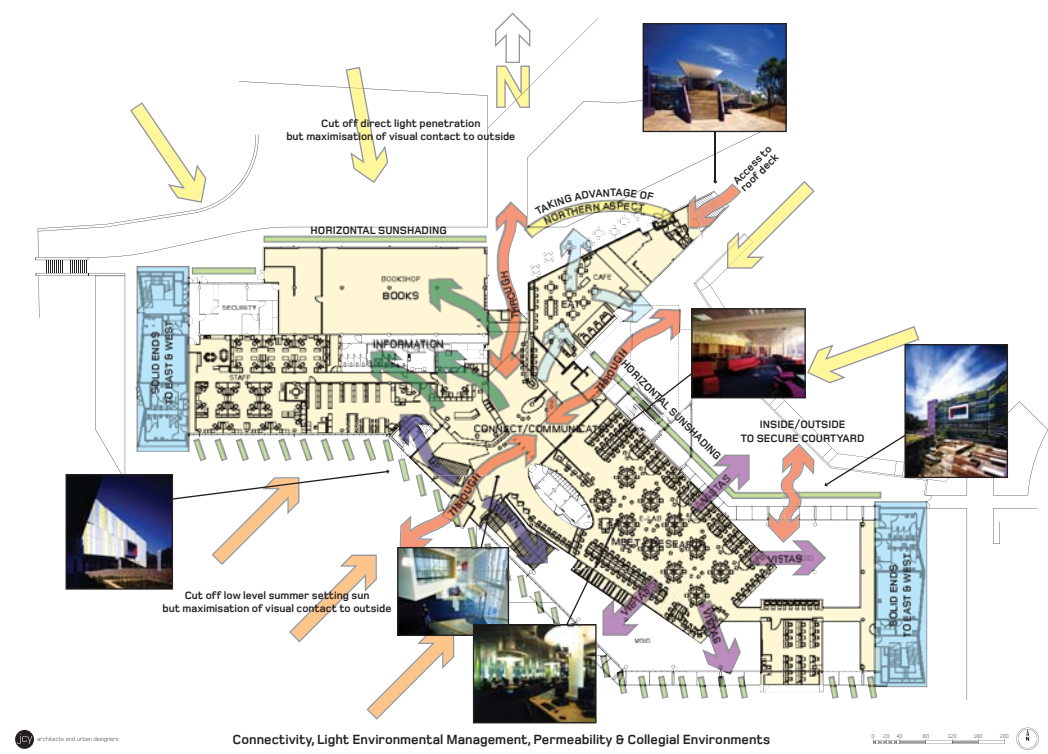
Environmentally sustainable design is common sense not a luxury and should be common practice for all Australian architects. The collaboration believe it must be achieved by applying the concepts of energy efficiency, life-cycle costing, waste management and careful selection of materials to produce design solutions that address 'triple bottom line' auditing principles. Green does not have to be expensive it is a discussion of appropriate action rather than technological innovation. Rather than framing our work around the 'ESD' tag we view sustainability as embodiment of our ideas and the core agenda of our practice and its manifestation is apparent in all projects.

Social Sustainability

We embrace the proposition that development of community is the only way that society can move forward effectively. Community demands an architecture of respect and restraint; not restraint of ideas or expression, but restraint in the imposition of an inappropriate architecture onto an existing condition. Our work seeks to explore the development of respect for place, people, context, and our collective inheritance; built fabric and natural environment.

iredalepedersenhook & JCY_Pier St
Perth_WA

Sir Peter Cook & Colin Fournier_Kunsthaus Graz
Graz_Austria



JCY_Edith Cowan University Library
Joondalup_WA

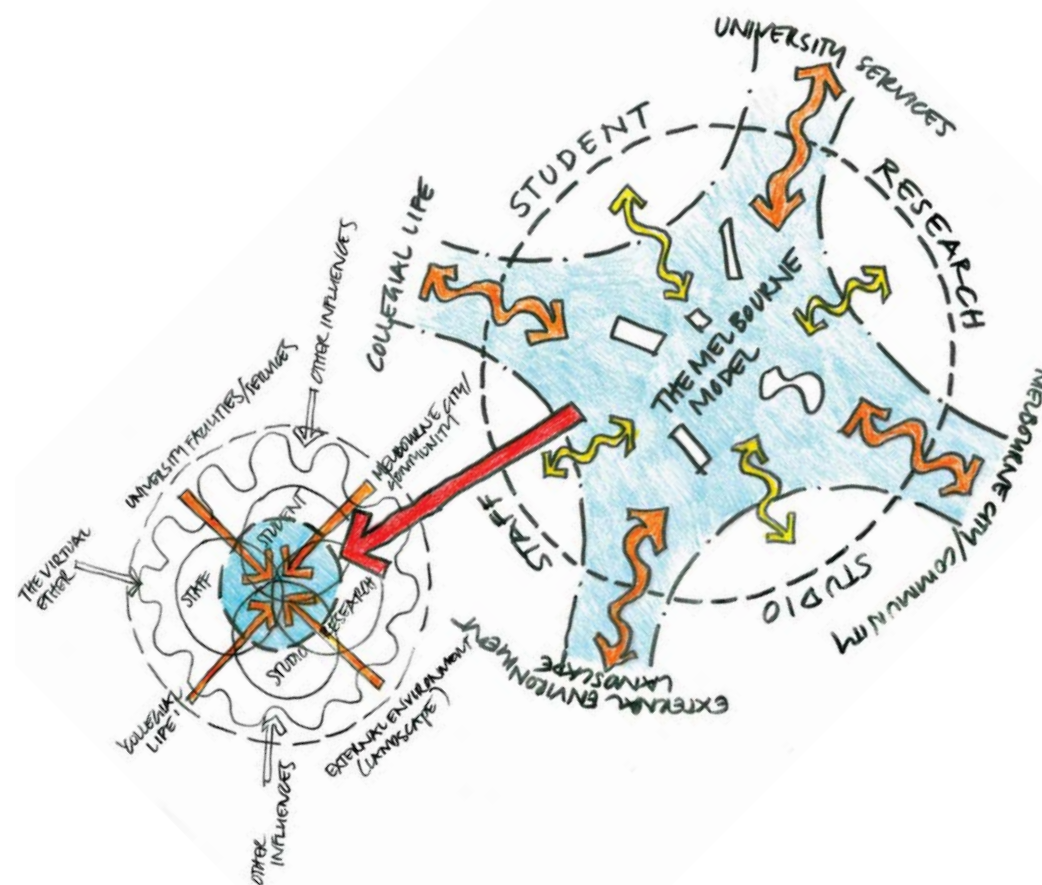
CRAB_Vienna University
Vienna_Austria



JCY_client meeting
Perth_WA



Sir Peter Cook & Colin Fournier_Kunsthau Graz
Graz_Austria



JCY_University vision of 'Melbourne Model'



iredalepedersenhook_client collaboration
Tjuntjunjara_WA

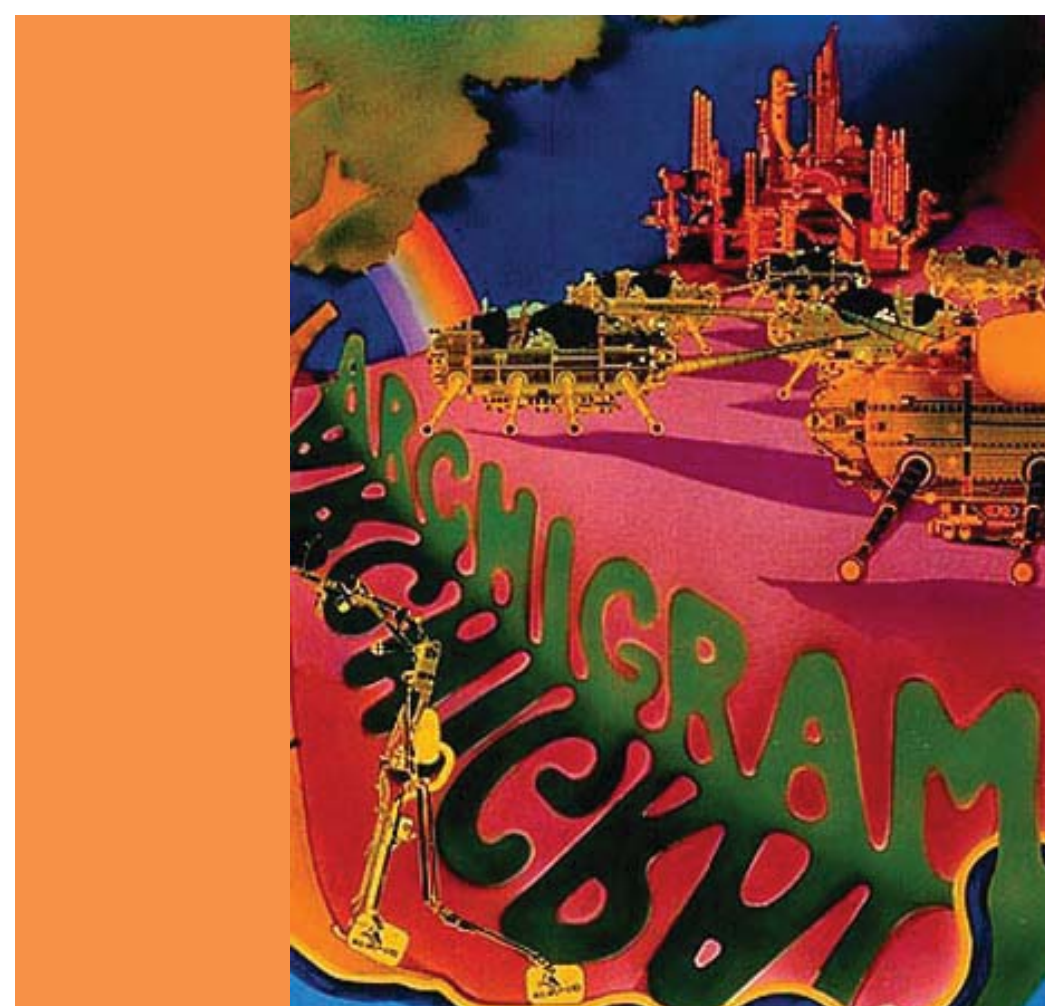
CAPACITY/ PROCESS/ PROCEDURE:

Martyn Hook is a registered architect in Victoria and **iph** and **JCY** are eligible for registration due their registration credentials in WA. **Sir Peter Cook** and **CRAB studio** shall provide design leadership and international representation to the project. **iph** shall provide significant experience in the pursuit of triple bottom line environmental solutions and **Hook's** significant experience of senior management of a highly regarded architecture school and ability to address the issues presented by the operative. **JCY** shall contribute a substantial body of experience in university projects, across Australia and Asia and an impressive track record of producing striking built form from restrictive budgets and complex briefs.

The architectural collaboration shall be supported by an equally impressive consulting engineer team. In London, **CRAB** are able to draw upon committed relationships with world class consultants of **Bollinger, Buro Happold, Max Fordham and Gross Max**. Locally **iph** would engage the services of **Peter Felicetti**, a structural engineer who has collaborated with architects on many significant award winning projects in Melbourne including Federation Square and maintains a firm relationship with **CRAB's engineers**. His practice has a serious grounding in innovative structural research reflected in his position as research fellow and the fact that he has an architecture degree. Locally we would look to **Jeff Robinson of Connell Wagner** for all for specific environmental consultation and **ARUP**.

JCY have primarily engaged **Arup** - for structural, civil through their innovation program by the way based out of London and Sydney. **Bassetts** - for mechanical, electrical, environmental, sustainability who have an outstanding track record in sustainability and Greenstar and have completed the first 6 star green star building in Perth and their staff run all the Greenstar programs. **John Macquire** who had been in Perth for many years now runs the Melbourne operation.

Utilising **JCY's** substantial University experience the consultant team propose a sophisticated but direct process of engagement with a well educated and articulate client group through a Charette – Enquiry by design process. The opportunity to bring together the intellect, knowledge and talent of all key stakeholders for a rigorous and stimulating Charette process for this project is unique. Our team will run an ongoing design enquiry process throughout the project's development which will be launched via a week long research, analysis, exploration and design process involving our complete consultant team, Faculty and University representatives, post graduate and undergraduate student representatives and key external stakeholders both from Melbourne and beyond as selected by our steering committee. This process, will be an opportunity to explore diversity, innovation, different ways of teaching and learning, and the bringing together of 'town and gown' where the University can fulfil its vision of the 'Melbourne Model' by creating a connected and urban collegial model founded on the creation of future leaders who will begin by being empowered by the process of the creation of this project. The outcome will be an incredible richness of thought and debate and the creation of 'champions' and 'ambassadors' for the future of education in Melbourne and beyond.



Sir Peter Cook
Archigram_1972



Sir Peter Cook & Colin Fournier_Kunsthhaus Graz
Graz_Austriav

MERIT:

CRAB Studio:

Professor Sir Peter Cook

Sir Peter Cook was recently knighted on the 15th November by her Majesty The Queen of England, for services to Architecture. Awarded the Royal Gold Medal for Architecture (as founder of Archigram) in 2004, Cook is a Royal Academician and commandeur de l'ordre des arts et lettres of the French Republic.

Founder of 'Archigram'

Year Master, Tutor : Architectural Association 1964-1990

Life Professor, HbK 'Staedelschule', Frankfurt-am-Main

Bartlett Professor of Architecture, Bartlett, University College London

Royal Academy Professor of Architecture

Qualifications : RA, AADipl, RIBA, BDA, FRCA, FRSA, ARB

GRAZ KUNSTHAUS OPENED IN SEPTEMBER 2002

HE CELEBRATION OF GRAZ AS CULTURE CAPITAL OF EUROPE. SINCE OPENING IT HAS WON MANY PRIZES AND SIGNIFICANT RECOGNITION FINAL OF 'STIRLING PRIZE', MIES VAN DER ROHE PRIZE AND HAS A DEDICATED PUBLICATION OF 'THE FRIENDLY ALIEN' BOGNOR, VIENNA

iredale pedersen hook architects

Awards

2008 Architectural Review International Awards for Emerging Architecture, London, England- Honourable Mention, Orang-utan Enclosure at Perth Zoo

2008 World Architecture Community Awards 2008, Citation by Honorary Members, New Orang-utan Enclosure at Perth Zoological Gardens.

2008 Australian Timber Design Award Overall Winner- Highly Commended, Sheep House Victoria- Environmental Commitment Award-

2007 Think Brick National Housing Competition- High Commendation

2007 RIAA WA Residential Architecture award Alterations: Gooseberry Hill

2007 Built Citation Award Portland Chapter IIDABridgeport Brewery and Bakery, Portland, America, with Holst Architecture

2006 Architectural Review International Awards for Emerging Architecture, London, England

Special Commendation for the Walmajarri Office and Staff House at Djugerari Community, via Fitzroy Crossing, Australia

2006 RIAA Colorbond Steel Award for the Walmajarri Office and Staff House at Djugerari Community,

JCY

JCY's educational projects which have been recognised as exemplars through awards such as the RIBA International Architecture Award for the ECU Library in 2007, numerous architectural and industry awards and specialist educational facility awards including the SCN & Designshare International Honour Award in 2001

ECU Library

RAIA Department of Housing and Works Architecture Award for Public Architecture 2007

RIBA International Award for Architecture 2007

ECU Science and Health Building

RAIA Architectural Award – Public/Institutional Category 2001

Blueprint International Architecture Award for Best New Public Building 2001

BHP Metal Building Award of Excellence – Certificate of Merit 2001

ECU – Kurongkurl Katitjin

RAIA Public/Institutional Commendation 2006

TAFE – AMTC

RAIA Award of Merit – Public/Institutional 1993

Architecture Medal 1999

TAFE/DET – Peel Education and TAFE Campus (with Spowers)

SCN and Designshare Award for Excellence in Education Facilities – Honour Award (International) 2001

BHP Metal Building Award of Excellence 2001

MBA Excellence in Construction Award

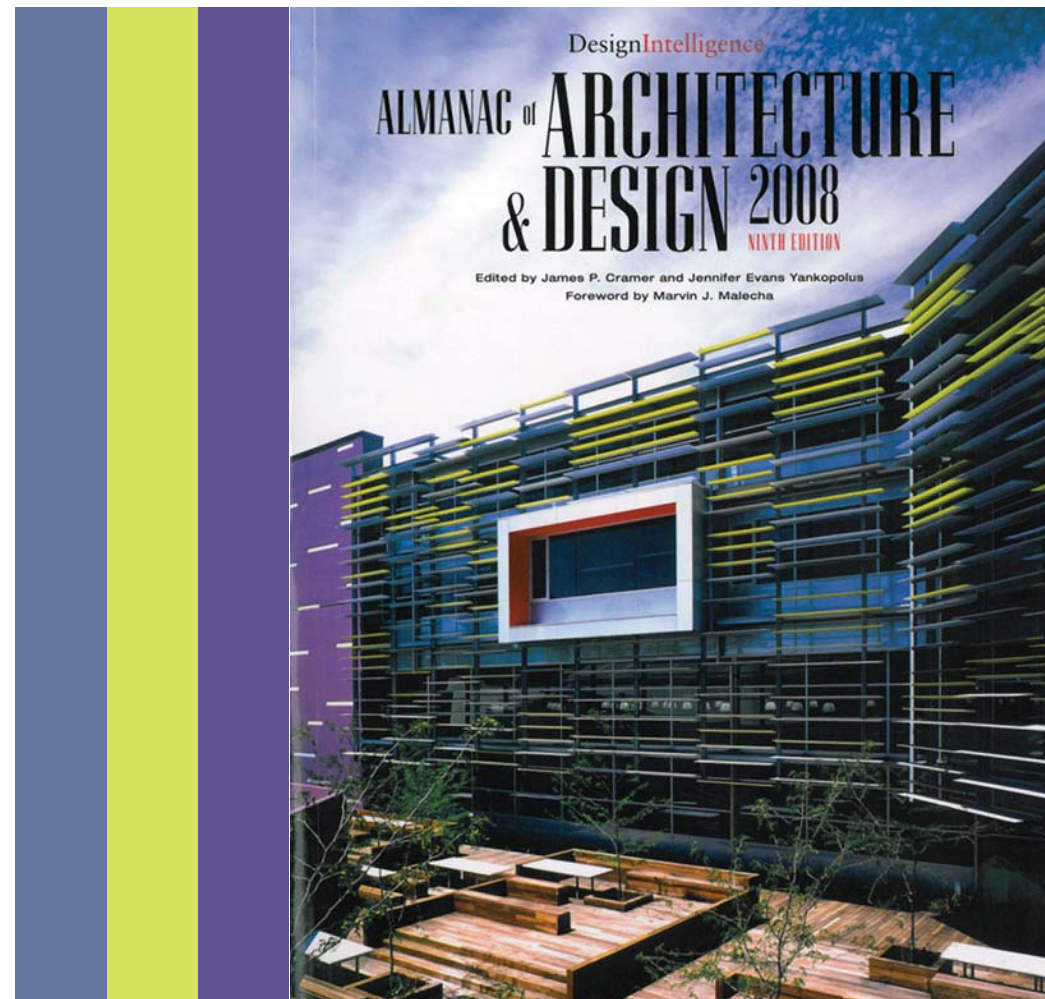
National Building Award – Certificate of Merit 2001

TAFE/DET - Margaret River Education Campus (with Neil Tweedie)

RAIA Award of Merit – Public/Institutional 2006

Learmonth International Airport

George Temple Poole Award 2000



JCY_Edith Cowan University Library
Joondalup_WA



iredalepedersenhook_Perth Zoo Orang Utan Enclosure
Perth_WA